

Pays : Royaume-Uni
Support : *The Burlington Magazine*
Date : Mars 2014

Périodicité : Mensuelle
Diffusion : NC
Catégorie : Presse écrite

SALON DU DESSIN – Palais de la Bourse, Paris

26–31 March 2014

A selection of highlights to be exhibited at the Fair



*A woman standing in water, her arms behind her back, her hair gathered up at the sides of her round face, by Auguste Rodin (1840–1917).
Watercolour and pencil,
32.2 by 25 cm.
JEAN-LUC BARONI,
LONDON*



*Caring owl (recto) and Study of a Horse (verso), by Jean-Louis-Théodore Géricault (1791–1824). Black chalk, pen and gray ink and watercolor on paper (recto) and black chalk (verso), 9.9 by 27.6 cm.
ARTURO & CORINNE CUÉLLAR, ZÜRICH*



*Fountain with two nymphs, by Pierre-Ennemond Petitot (1727–1801). Pen and black ink with brown wash over traces of red chalk, 25.1 by 17 cm.
GALERIE PAUL
PROUTÉ, PARIS*

THE TWENTY-THIRD Salon du Dessin will be staged during the last week of March. The thirty-nine specialist drawings dealers setting up shop at the Palais Brongniart will show a vast range of works, from old-master to modern and contemporary art. There will be a fresh intake of newcomers: Nathalie Motte-Masselink will be showing old masters such as Charles Le Brun and Guercino alongside sheets by less well-known and contemporary artists; also new to the fold will be Mathieu Néouze, a specialist in 19th-century symbolists and the Realist movement of the early 20th century.

Another point of interest at the fair will be the stand of Applicat-Prazan, where a monographic display of works by Nicolas de Stäel will be shown.

Twenty-three museums will participate in the fifteenth Semaine du Dessin, including the Louvre and Musée Rodin, which will show exhibitions and host talks about 'architectural drawing in all its facets'.

The in-house exhibition this year will be drawn from the collections of the Musée des Beaux-Arts, Nancy, and will focus on architectural views and landscapes from the first half of the nineteenth-century. Included will be works by Victor Baltard, Eugène-Emmanuel Viollet-le-Duc and Giovanni Paolo Pannini.

Complementing the guest museum exhibition will be a symposium comprising ten lectures based on the theme of architectural drawings (on 26th and 27th March).

For more information on the fair and attendant events, please visit: www.salondudessin.com



*Study of a nude, by Edgar Degas (1824–1917). Mark stamped in red ink in the lower left (Lugt 658). Charcoal and pastel on paper, 55.8 by 36.8 cm.
LE CLAIRE
KUNST,
HAMBURG*

Pays : Royaume-Uni
Support : *The Burlington Magazine*
Date : Mars 2014

Périodicité : Mensuelle
Diffusion : NC
Catégorie : Presse écrite

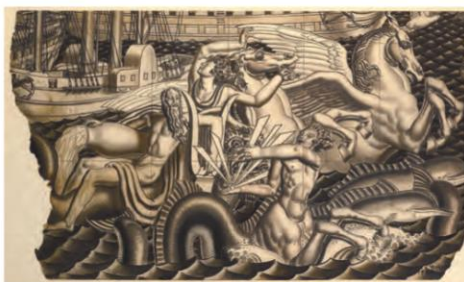
SALON DU DESSIN – Palais de la Bourse, Paris

26-31 March 2014

A selection of highlights to be exhibited at the Fair



Signs and representations, by Joan Miró (1893–1983), 1935.
Ink and watercolour on paper, 32 by 42 cm.
GALERIA DE OSMÁ, MADRID



A study for the mural 'The chariot of Poseidon' for the liner 'Normandie', by Jean Dupas (1882–1964). Signed and dated: 'Jean Dupas/1935'.
Pen and black ink with grey and brown wash, 42.2 by 72.5 cm.
STEPHEN ONGPIN FINE ART, LONDON



A cottage in a landscape, by Abraham Bloemaert (1564–1651).
Pen, brown ink and watercolour, 13 x 18.5 cm.
DAY & FABER, LONDON



Studies for a ceiling decoration, by Michel Dorigny (1617–65).
Red chalk,
41 by 27 cm.
GALERIE ERIC
COATALEM, PARIS



View of an Italian park, by Jean-Honoré Fragonard (1732–1806).
Bistre wash over black chalk, 35.5 by 46.5 cm.
DIDIER AARON & CIE, PARIS



Trees along the water with sailing boats (recto) and Study of a boat in a pond (verso), by Pierre-Auguste Renoir (1841–1919), 1895. Watercolour, 17 by 23 cm.
PANDORA OLD MASTERS INC., NEW YORK